

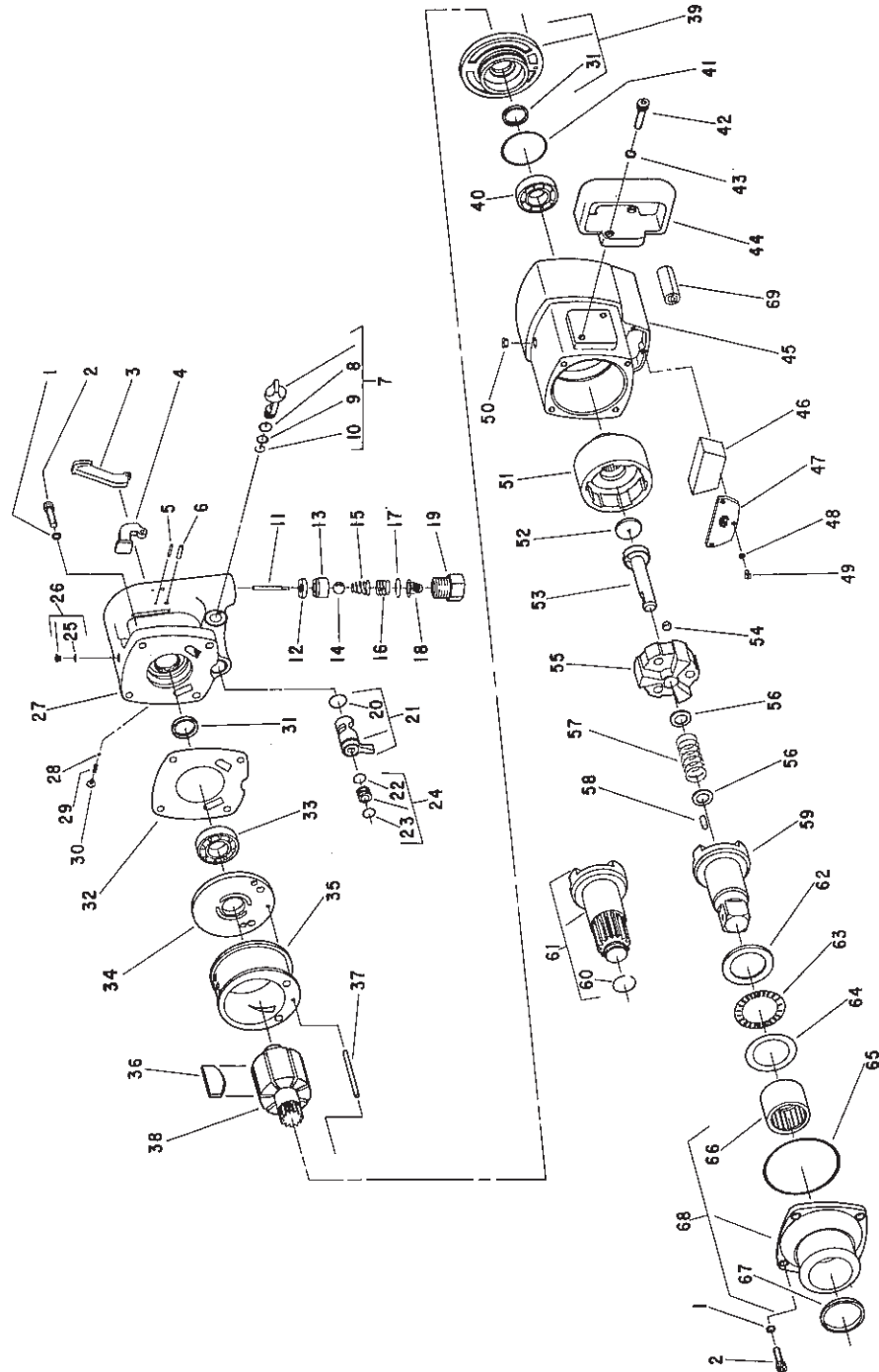


**SIoux
TOOLS INC.**

2901 FLOYD BOULEVARD ■ SIOUX CITY, IOWA 51102 ■

Form A518
Dated 8/81
E.D. 8/81

Parts List For 4055, 4056, 4057, 4058, 4059, & 4060 Air Impact Wrench



Furnish Catalog and Serial Number When Ordering Parts

Parts List For 4055, 4056, 4057, 4058, 4059, & 4060 Air Impact Wrench

Furnish Catalog and Serial Number When Ordering Parts

| Fig- ure | Part No. | Name | Fig- ure | Part No. | Name |
|-------------|-------------|---------------------------------------|-------------|-------------|--|
| 1 | 09768 | Washer—Lock (8)* | 37 | 54577 | Pin—Guide |
| 2 | 08845 | Screw—Soc. Hd. Cap (8)* | 38 | 54582 | Rotor |
| 3 | 11571 | Trigger—External (4058) (4059) (4060) | | 13265 | Plug-Rotor (5)* |
| 4 | 11573 | Trigger—Inside (4055) (4056) (4057) | | 13264 | Plug-Rotor (2)* |
| 5 | 30219 | Pin—Roll | 39 | 53808 | Assy.—End Plate (Front) |
| 6 | 30178 | Pin—Roll | 40 | 10283 | Bearing—Ball |
| 7 | 53807 | Assy.—Control Output | 41 | 14310 | Ring—"O" |
| 8 | 14312 | Ring—"O" | 42 | 08232 | Screw—Soc. Hd. Cap (2)* |
| 9 | 14290 | Ring—"O" | 43 | 09750 | Washer—Lock (2)* |
| 10 | 21751 | Ring—Retaining | 44 | 12390 | Handle—Auxiliary |
| 11 | 54579 | Plunger—Valve | 45 | 12394 | Housing |
| 12 | 04262 | Seat—Throttle Valve | 46 | 14150 | Pad—Silencer |
| 13 | 13289 | Retainer—Valve Seat | 47 | 30771 | Screen—Exhaust |
| 14 | 10904 | Ball—Steel 9/16" Dia. | 48 | 09712 | Washer—Lock (3)* |
| 15 | 41302 | Spring—Valve | 49 | 06650 | Screw—Pan Hd. (3)* |
| 16 | 41231 | Spring | 50 | 30246 | Plug—Pipe |
| 17 | 21512 | Ring—Retaining | | 40019 | Hanger—Eyebolt |
| 18 | 33736 | Assy.—Screen | 51 | 54570 | Driver—Hammer |
| 19 | 54580 | Bushing—Air Inlet | 52 | 54576 | Washer—Thrust |
| 20 | 14378 | Ring—"O" | 53 | 54573 | Cam |
| 21 | 53809 | Assy.—Reversing Valve | 54 | 10293 | Ball—Steel 13/32" Dia. |
| 22 | 14340 | Ring—"O" | 55 | 54571 | Hammer |
| 23 | 14309 | Ring—"O" | 56 | 54578 | Washer (2)* |
| 24 | 53810 | Assy.—Sleeve Seal | 57 | 41286 | Spring |
| 25 | 14369 | Ring—"O" | 58 | 30458R | Pin |
| 26 | 44253 | Oiler Screw | 59 | 54574 | Anvil 1" Sq. (4055) (4058) |
| 27 | 53811 | Handle—Includes Figs. 26 & 31 | | 54596 | Anvil 1" Sq. (6" Ext.) (4056) (4059) |
| 28 | 10900 | Ball—Steel 9/64" Dia. | 60 | 21538 | Ring—Soc. Retainer (4057) (4060) |
| 29 | 21432 | Spring | 61 | 54575 | Assy.—Anvil Spline (4057) (4060) |
| 30 | 07202 | Screw—Phil. Rd. Hd. | 62 | 54572 | Washer—Thrust |
| 31 | 30768 | Seal (2)* | 63 | 10032 | Bearing—Needle |
| 32 | 05018 | Gasket | 64 | 10033 | Seat—Needle Bearing |
| 33 | 10238 | Bearing—Ball | 65 | 04268 | Ring—"O" |
| 34 | 11430 | End Plate—Rear | 66 | 10067 | Bearing—Roller |
| 35 | 54790 | Cylinder | 67 | 30767 | Seal |
| 36 | 53812 | Vane—Rotor (Set of 7) | 68 | 53788 | Assy.—Hammer Case |
| | | | 69 | 14154 | Liner—Silencer (3)* |
| | | | NS | 14319 | Ring—"O"—For 54574, 54596 & 54575 Anvils |
| | | | NS | 34665 | Retainer Pin —For 54574 & 54596 Anvils |
| | | | NS | 54834 | Retainer Pin For 54575 |

NS—Not Shown

*Order Quantity As Needed



**SIoux
TOOLS INC.**

2901 FLOYD BOULEVARD ■ SIOUX CITY, IOWA 51102 ■

PRINTED IN U.S.A.